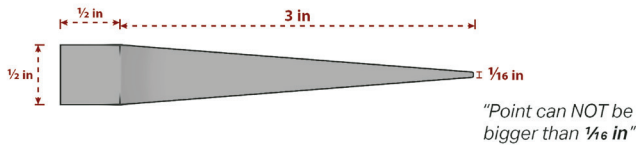
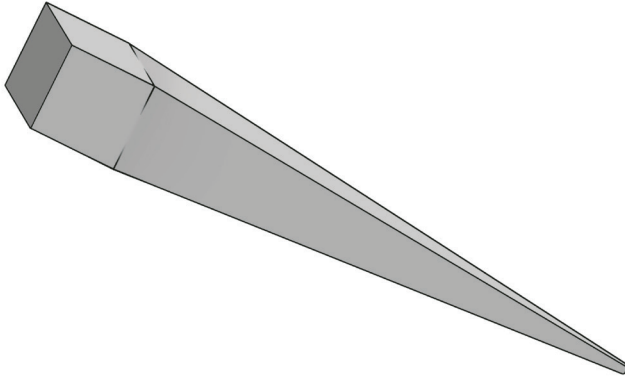




# Division 1

Less than 1 year of experience

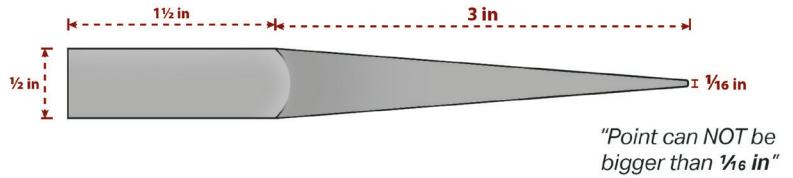
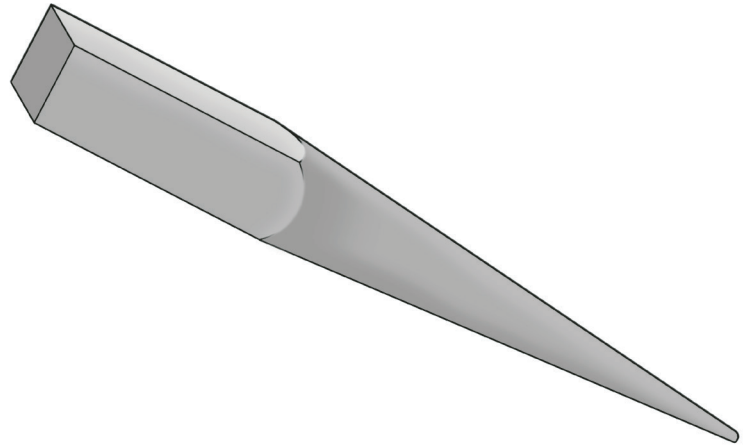


## Session I Square Punch

Material: 30" of 1/2" square stock

Description: A hardened, hand-forged steel tool with a tapered square tip used to create or enlarge square holes in hot metal.

Total length of punch should be 3 1/2". The punch point should be no more than 1/16". Cut finishing length after point is forged.

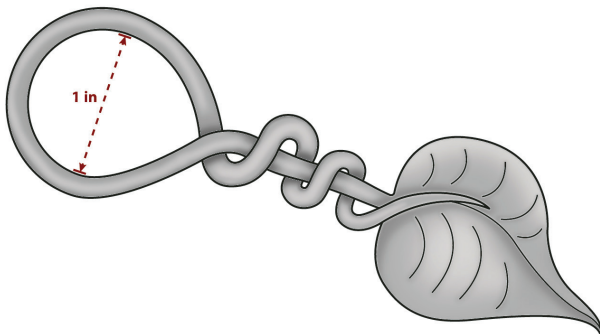


## Session II Round Punch

Material: 1/2" Square - material session 1 remaining

Description: A hardened, hand-forged steel tool with a tapered round tip used to create or enlarge round holes in hot metal.

Total length of punch should be 4 1/2". The punch point should be no more than 1/16". Cut finishing length after point has been forged



## Session III Leaf Key Chain Ring

Material: 12" of 5/16" Cold Rolled 1018

Description: A durable everyday carry item meant to make keys easier to find. Features a spiral tail, textured veins, and a 3D curving shape.

The internal diameter of the key ring must be 1". The leaf will be judged on its shape and finish.